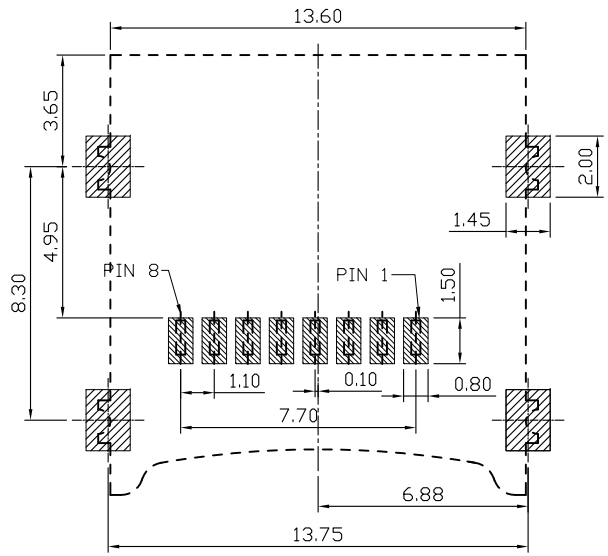
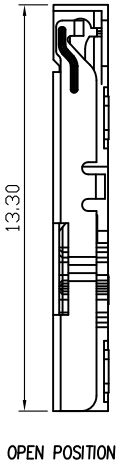
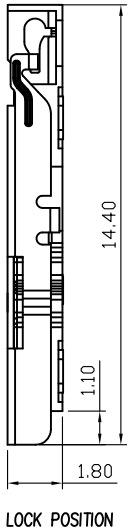
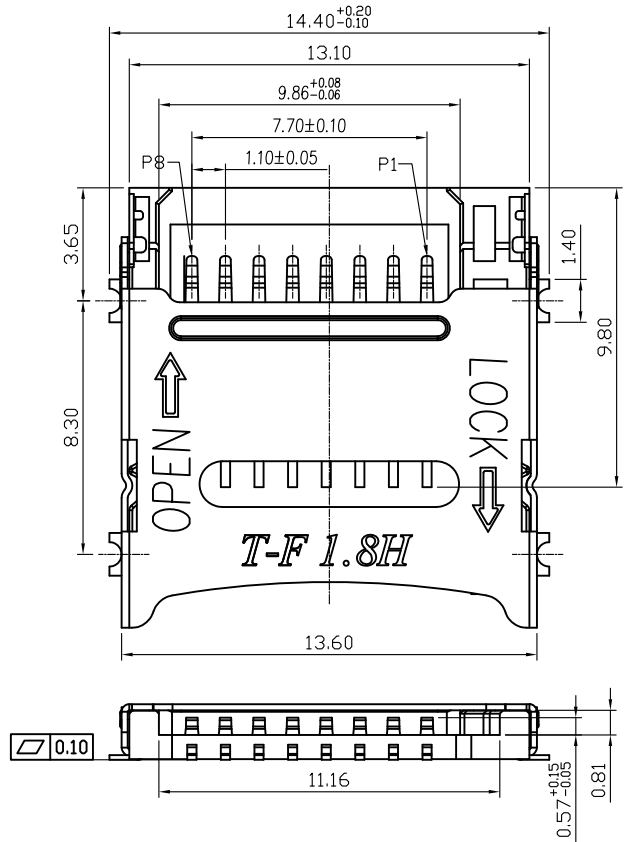




REVISIONS				
LTR	DESCRIPTION	DATE	DWN	APVD
A	RELEASED	01Jan16	AW	WK



RECOMMENDED PCB LAYOUT TOLERANCES: ±0.05

PIN NO.	PIN ASSIGNMENT
PIN 8	DAT1
PIN 7	DAT0
PIN 6	VSS
PIN 5	GLK
PIN 4	VDD
PIN 3	CMD
PIN 2	CD/DAT3
PIN 1	DAT2

- NOTES:
- MATERIAL:
    - HOUSING: LCP UL94V-0
    - CONTACT: C5191
    - SHELL: SUS304
  - FINISH:
    - CONTACT:
      - 1µ"Min.Au PLATED ON CONTACT AREA
      - 100µ"MIN MATTE TIN PLATING ON SOLDER TAIL AREA
      - 50~80µ" NICKEL UNDERPLATING OVERALL
  - SPECIALTY:
    - Rated Current:1.0A
    - Rated Voltage:30V
    - Contact Resistance:50mΩ Max
    - Insulation Resistance:100MΩ Min 100V DC
    - Dielectric Withstanding Voltage:100V AC
    - Solder Ability:245±5°C;5±0.5s
    - Durability:5000 cycles
    - Operating Condition:Temperature:-30°C~+80°C; Humidity:80%R.H Max

YLO04-007-XXX  
PART NUMBER

THIS DRAWING IS A CONTROLLED DOCUMENT.		DWN A. WU 01Jan2016	<b>东莞市宇亮电子有限公司</b> DONG GUAN YU LIANG ELECTRONICS CO., LTD
DIMENSIONS: mm		CHEK S. CHIEN 01Jan2016	
 THIRD ANGLE PROJECTION		APVD Abel 01Jan2016	MICRO SD CARD 掀盖 H=1.8 DRAWING No. <b>YLO04-007</b>
TOLERANCES UNLESS OTHERWISE SPECIFIED: 0 PLC ± 0.50 1 PLC ± 0.30 2 PLC ± 0.20 3 PLC ± 0.15 4 PLC ± - ANGLES ± 3°		PRODUCT SPEC — WEIGHT —	SIZE A4 SCALE 1 : 1 SHEET 1 of 1
		CUSTOMER DRAWING	